



Vittoria Walk, Montpellier, Cheltenham, GL50

Guide Price £350,000

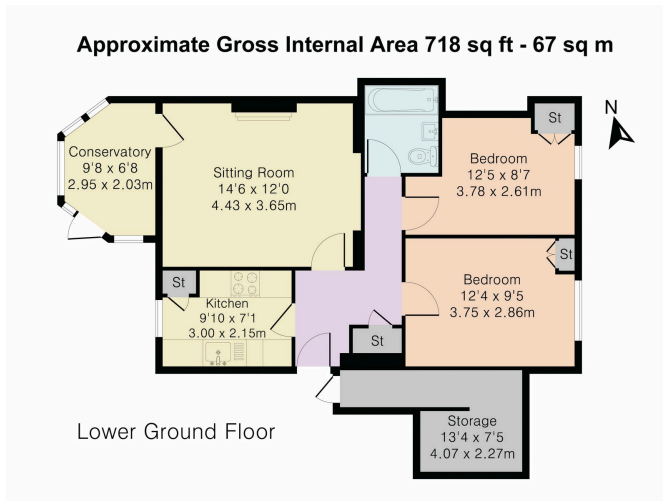
🛏️ 2 🚿 1 🚗 1



- Grade II Listed property
- Side and rear access
- Spacious living/dining room
- Central Montpellier location
- Beautifully presented
- Private patio garden
- Modern kitchen
- Charming conservatory
- Two double bedrooms
- Allocated off-street parking



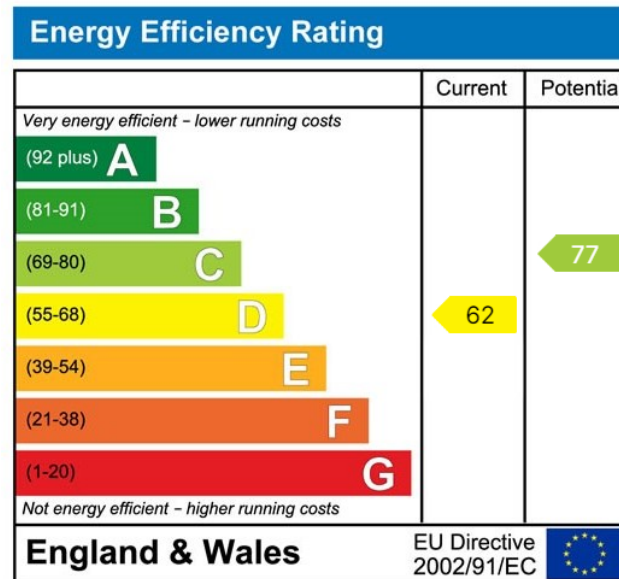
This beautiful two bedroom garden apartment is located in one of Montpelier's prestigious Grade II Listed buildings, it combines modern living with historical charm. With its generous living spaces, two bedrooms, private garden, and prime location, it's perfect for those seeking a sophisticated town lifestyle. Don't miss your opportunity to view this exceptional property—schedule a visit today!



PINK PLAN

Although Pink Plan Ltd ensures the highest level of accuracy, measurements of doors, windows and rooms are approximate and no responsibility is taken for error, omission or misstatement. These plans are for representation purposes only as defined by RICS code of measuring practice. No guarantee is given on total square footage of the property within this plan. The figure shown is for initial guidance only and should not be relied on as a basis of valuation.

67 sq m
Total Property Measure



Elliot Oliver Sales
 101 Promenade, Cheltenham GL50 1NW
 01242 321091
 www.elliottoliver.co.uk

